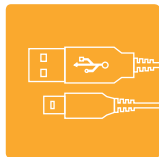


# manual

## Pixaver Expo

English manual

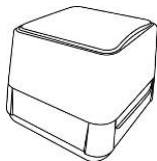


plexgear®

## Specifications

Image sensor	1/3,2" 5 megapixels CMOS
Lens	F = 2,8, f=4,76 mm
Focus	Fixed
Exposure control	Automatic
Color balance	Automatic
Scan resolution	1800 dpi
Image resolution	2592 x 1728 pixles (3:2)
Light source:	LED
PC interface:	USB 2.0
Image size	Slide and negative (36 x 24)
Power source	USB from computer
Included software	ArcSoft MediaImpression
Dimensions (WxHxD)	95 x 75 x 100 mm

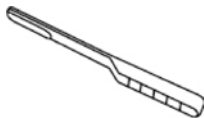
## Package contents



Digital image copier



CD



Cleaning brush

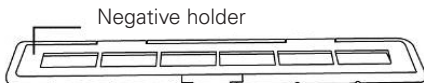
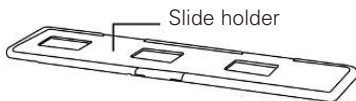
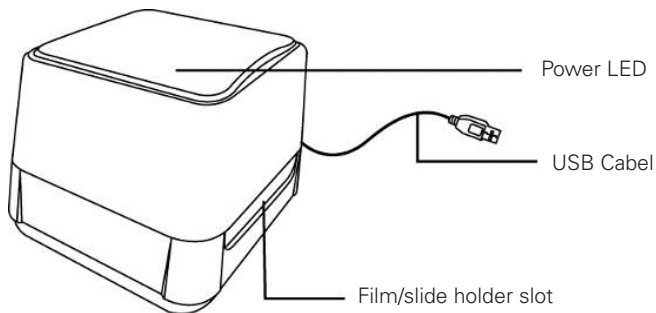


Slide holder



Negative holder

## Part names



**Note:** We suggest using the bundled cleaning brush to clean the glass of the Digital image scanner film holder slot periodically to produce a clear image. Please make sure your negatives/slides are clean before inserting them into the Digital image scanner. Dust or dirt from the negatives/slides will affect the quality of your scanned images.

## Software installation (Windows)

(Mac OS X, page 8)

Plexgear Pixaver Expo does not need a driver to be installed. The driver will be installed automatically when the scanner is connected to your computer. You will need the MediaImpression software to capture and edit your pictures.

Insert the CD and select ArcSoft software. Follow the installation guide to install the software.



## Place film / slides into the holder

Place the negative/slides into the holder as illustrated below.



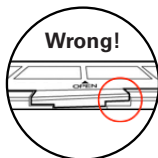
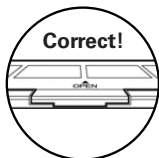
1. Open the holder



2. Place the negative/slides



3. Close the holder

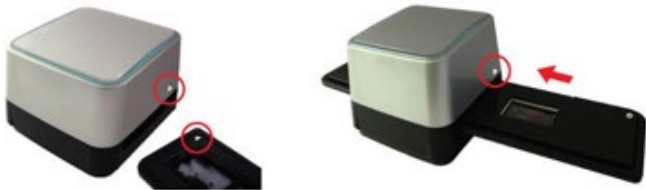


Please make sure the holder is correctly closed.

## Connect to a computer

Plug the USB cable into your computer's USB 2.0 port. Once connected the Power LED light will turn on.

## Insert the holder



Insert the loaded film/slide holder properly into the slot according to the signs.

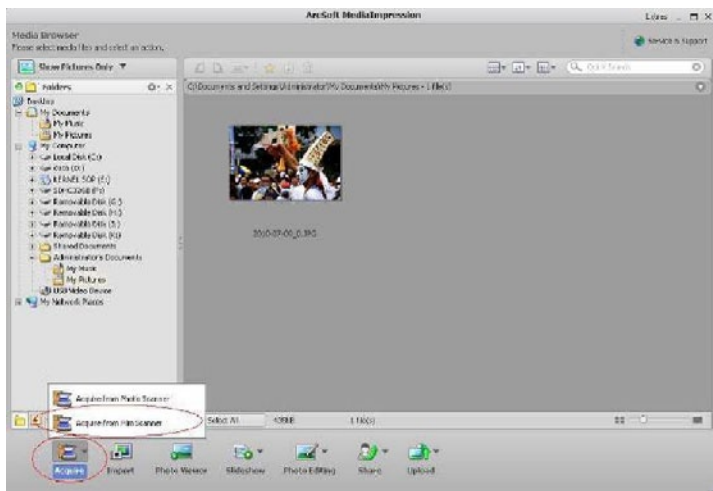


You can adjust the location of the film by moving the film holder, the film holder can be moved in both directions.

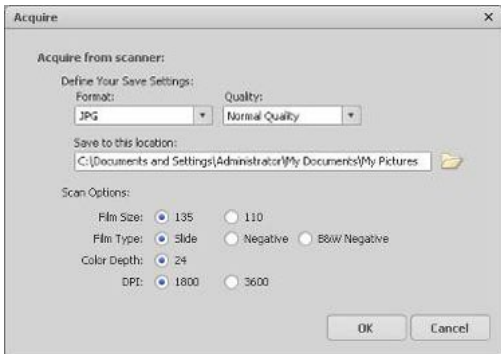
**Note:** Inserting holders incorrectly may damage your scanner.

# Capture

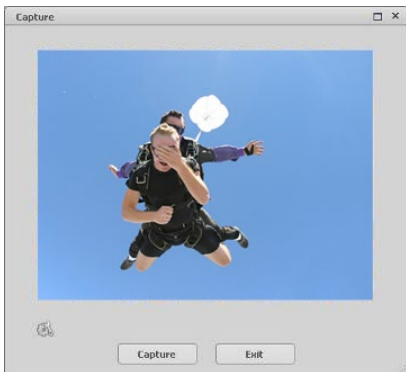
Start MediaImpression.



Click "Acquire" and choose "Acquire from Film Scanner"



Select file format and quality, source folder, film size, film type and resolution. Click 'OK'.



Click 'Capture'.

## Editing pictures

### Photo Editing Tools

The Photo Editing Tools module includes a complete set of photo enhancement, editing and retouching controls.

The windows can be stretched to provide a large size view of the active photo. Double click the module's tool bar to maximize the window to fill the computer screen.

In addition to the large photo workspace, the Photo Editing Tools module includes five distinct sets of controls:

#### 1. Adjust

##### 1.1 Enhance

The Enhance feature includes two types of controls:

- Auto Enhance



Click the "Auto Enhance" button to improve the overall quality of your pictures with a single click.

- Manual Fix

For precise image enhancement control, adjust the brightness, contrast and sharpen sliders.

Enhance a photo manually:

1. Move the sliders to adjust the level of brightness, contrast, saturation, hue and sharpnes for adjustment.
2. Use the zoom slider to get a closer look at how the adjustment affects the photo.
3. Click "Apply" if you like the result. Click "Cancel" if you do not.

## 1.2 Color

This feature is designed to fix Digitize photos that have unnatural color or appear too dark. It's also great for fixing scanned versions of old prints that have faded or whose colors have changed after many years.

How to fix the color of a photo:

1. Drag the color balance sliders to make the photo color appear more natural. Add red or yellow to make the photo warmer. Add blue or green to make the photo cooler.
2. Drag the Lighter/Darker slider to the left to reveal details hidden in a dark photo or to the right to make a faded photo look new again.
3. Click "Apply" if you like the result. Click "Cancel" if you do not.

## 1.3 Red-Eye

This feature makes it easy for you to fix a red-eye – a common problem in flash photography.

There are two ways to fix red-eye:

- Auto Fix 

1. Simply click the "Fix Red-Eye" button to automatically fix all red-eyes.
2. If not all of the red eye is fixed, use the "Click to Fix" method.

- Manual Fix

1. Use the zoom slider on the toolbar to zoom in on the photo.
2. Drag the small white box inside the zoom navigator to move over a red eye.
3. Place your cursor directly over the red eye and click.
4. Repeat the process until all the red eyes are fixed.
5. Click "Undo" if you make a mistake or don't like the result.

## 1.4 Crop

This feature enables you to trim photos for a dramatic effect or cut off the distracting parts of a picture.

How to use the crop function:

1. Choose the crop orientation (portrait or landscape).
2. Select a fixed proportion for the crop rectangle (4:6, 5:7, 8:10) or choose "Custom" if you want to use a different proportion.
3. Resize the crop rectangle by clicking and dragging the red lines.
4. Move the crop rectangle into position by clicking and dragging inside the red box.
5. Click "Crop": The area inside the rectangle will be kept, the area outside will be trimmed away.
6. Click "Undo" if you make a mistake or don't like the result.

## 1.5 Straighten

This feature enables you to fix photos that appear to be tilted.

How to use Straighten:

1. Move the slider (or click the rotate buttons) until the photo appears straight.
2. Use the superimposed grid lines for vertical and horizontal reference.
3. Click "Apply" if you like the result. Click "Cancel" if you do not.

## 1.6 Blur Background

This feature can be used in subtle way – to tone down un-important background details, or for dramatic effect- by making the main subject of a photo "pop out" of the picture.

How to use the Blur Background function:

1. With your cursor, trace a line around the person or object you want to stand out. When you release the mouse button, the area outside the traced line will become slightly blurred.
2. Drag the first slider to make the transition between the blurred and non-blurred area sharp or smooth.
3. Drag the second slider to increase or decrease the amount of blur.
4. Click "Apply" if you like the result. Click "Cancel" if you do not.

## Saving Your Results

When you're done editing a photo, click "Save as" to save your results. You can choose to overwrite the original file or save a new one.

Click "Close" to exit the Photo Editing Module.

## 2. Retouch

### 2.1 Healing Brush



The Healing Brush is good for fixing dust, scratches and removing skin blemishes.

How to use the Healing Brush to fix a skin blemish:

1. Establish a source point for the Healing Brush by holding the Shift key and clicking on an area of the skin that is close in color and texture to the area you want to heal.
2. Use the zoom control to zoom in on the blemish.
3. Adjust the size of the healing brush so the cursor (circle) is only slightly larger than the blemish.
4. Paint over the blemish. The area will be concealed.
5. Click "Undo" if you make a mistake or don't like the result.



### 2.2 Clone

The Clone tool is good for removing unwanted elements from a photo. It can also be used for a fun effect, like moving a nose from one person to another.

How to use the Clone tool to remove a telephone pole from the background of a photo:

1. Establish a source point for the Clone tool by holding the Shift key and clicking on an area of the sky that you want to use to paint over the telephone pole.
2. Adjust the brush size so the cursor (circle) is only slightly larger than the widest part of the telephone pole.
3. Click and hold your mouse button and carefully paint over the telephone pole. Do not release the mouse button until the job is done. The sky will be cloned into place.
4. Click "Undo" if you make a mistake or don't like the result.

### 2.3 Lighten/Darken



The Lighten/Darken tool is good for adjusting specific areas of a photo.

### 2.4 Smudge



Simulate the smearing of wet paint. Click and drag the sliders to change the brush size and sharpness.

## 2.5 Sharpen



Sharpen blurry areas. Click and drag the sliders to change the brush size and transparency.

## 2.6 Blur



Smooth out rough areas. Click and drag the sliders to change the brush size and intensity.

## 2.7 Paint Brush



Allows you to “paint” on your image when you click and drag the mouse. Click and drag the sliders to change the brush size and transparency.

## 2.8 Line



Draw a straight line in the photo. Click and drag the sliders to change the line width and transparency.

## 2.9 Eraser



Simulate an eraser, removing the image painting by paintbrush and line tools from your photo. Click and drag the sliders to change the eraser size and effect.

## 3. Clipboard

Clip the pictures by selecting Rectangular, Elliptical, Freehand, Magic wand and Magnetic.

**Note:** For more detailed information, please refer to the help section of the program.





**plexgear®**